

Mission Statement: The Mission of Crisis Connection Inc. is to work in partnership with communities to empower victims, survivors & persons affected by domestic & sexual violence through confidential crisis intervention, education and advocacy in Crawford, Dubois, Orange, Perry and Spencer Counties.

[www.crisisconnectioninc.org](http://www.crisisconnectioninc.org): **168,687** visitors during October 2006... tell a friend about our site

P.O. Box 903 Jasper, IN 47547 (812) 482-1571 fax 24-Hour Hotline 1-800-245-4580 [cci@psci.net](mailto:cci@psci.net)  
Dubois County (812) 482-1555 Perry County (812) 547-8878 Spencer County (812) 649-2303

## DOMESTIC VIOLENCE and COMMUNITIES of FAITH

North Carolina Council for Women

### How Is Domestic Violence a Spiritual Issue for Victims?

Victims of domestic violence are abused and battered by the very people they love, trust, support and believe in. Often abusive relationships begin as healthy relationships do.

Perhaps the victim meets her new partner in her own faith community or in an affiliated setting. The relationship may progress quickly and the couple's commitment may intensify in a relatively short period of time.

There may be subtle warning signs, but nothing overtly abusive may occur for a while.

The abuser may begin to emotionally abuse the victim, becoming increasingly critical, and begin to isolate her from friends and family, monitoring her activities.

The abuser may begin to question the victim's faith or misuse spiritual teachings to justify abusive actions and beliefs.

*Cont. next column*



Some tactics an abuser may use are:

- Misusing religious teachings, doctrine, scriptures and practices to justify positions of absolute authority, abuse and violence.
- Not allowing the victim to read, have access to or destroying the victim's spiritual books, materials, prayer beads, religious dress, spiritual items, and religious artifacts.
- Interrupting or interfering with the victim's attempts to study religious teachings, pray or communicate with her God.
- Not allowing the victim to attend her faith communities' worship services, faith community sponsored events, and/or ceremonies.
- Accusing the victim of inappropriateness with members of her faith community and/or the religious leader, justifying restriction from communication/contact.

*Cont. next column*

- Forcing the victim to worship and adhere to his religious beliefs; forcing the victim to attend services that are not her own.

- Forbidding the victim from participating in religious holidays.

- Not allowing the victim to tithe or to receive money from the faith community.

### Faith Brochures Available

*"Domestic Violence: What Congregations Need To Know"* published by the Indiana Coalition Against Domestic Violence is available from Crisis Connection, Inc. by calling **482-1555**.

This pamphlet includes information that churches, synagogues, mosques and other faith communities can use to make a difference in their place of worship and the community.



# Commit to making a difference...today

## Words of Strength & Faith

“To save even one life is to save the whole world. To destroy even one life is to destroy the whole world.”

*The Talmud, Sanhedrin, Chap 4; Misnah 5*

“In joy and safety Let every being’s heart rejoice...Let none betray another’s trust or offer any slight at all, Or ever let them wish in wrath, Or in revenge each other’s ill.”

*The Buddha, Bhikkku Nanamoli*

“Act calmly, not coldly. Peace is greater than anger. Tranquility and harmony are the true order of things.”

*The Tao Te Ching, Book 2, Chap 45*

“Non-violence is the first flower of worship, control of the senses the next. Forgiveness and compassion for all living beings are special varieties of flowers.” *The Bahagavat Puran*



## Know Your ABC's

Faith Institute

**A**

Admit that violence happens in your faith community.

**B**

Believe the survivor.

**C**

Counseling and support resources are available...call us today.



## Thoughts on Faith & Violence

**Rabbi Dennis Math:** “We permit people to pursue their freedom as long as their freedom does not infringe on ours. But maybe we should question this tolerant attitude. In the Torah...we are told to rebuke our neighbor. It is implied that what our neighbor is doing is our concern. Perhaps we have learned in a tragic way that our respect for our neighbor’s privacy must not be as important as other considerations. When we hear that a person is being harmed, we cannot be respectful of our neighbor’s privacy. We must risk even being wrong, being embarrassed, and even evoking a neighbor’s anger...”

**The Battered Woman’s Survival Guide:** “If she finds herself talking to a cleric who tells her that she is the cause of all her problems, or that she should go home and pray for guidance to become a better woman, or that she should go home and pray for forgiveness because she questioned her husband’s authority, or that she should go home and pray for the Lord to make her husband a better person, or that she is making it all up and she doesn’t mean what she is saying, she should thank him or her politely and get up and leave. She must not pay attention to what she has been told. These are not the correct answers for her problem. She needs to find a humane religious advisor who is aware of the problems of domestic violence and who can help her, not one who makes her feel guilty.”

**Reverend Marie Fortune:** “Once justice has been accomplished, even in a limited way, forgiveness becomes a viable opportunity. Prior to justice, forgiveness is an empty exercise. Forgiveness before justice is “cheap grace” and cannot contribute to authentic healing and restoration to wholeness for the victim or for the offender. It cuts the healing process short and may well perpetuate the cycle of abuse. It also undercuts the redemption of abusers by preventing them from being accountable for their abusive behavior.” [www.faithinstitute.org](http://www.faithinstitute.org)

## Theological Confusion?

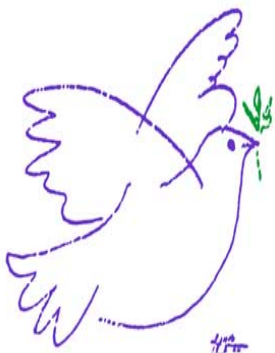
Marie M. Fortune: *Ministry in Response to Violence in the Family: Pastoral and Prophetic*

“A theology that allows a victim of wife abuse to explain her condition by viewing herself as a suffering servant—someone whom God has called to suffer at the hands of her abuser in the hope of bringing him to salvation—is in fact a doormat theology...Likewise, a theology that maintains the priority of obedience to the authority of the father in the family—even when that father is molesting his children—denies the suffering of the children at his hands and reinforces the misuse of parental power to the detriment of those vulnerable to it.”

## You CAN Make a BIG Difference Day by Day!



- 1 Check out the Domestic Violence section of our Website at [www.crisisconnectioninc.org](http://www.crisisconnectioninc.org)
- 2 Begin planning for *National Crime Victim's Awareness Week*. Information is available from the *Office for Victims of Crime* @ <http://www.ojp.usdoj.gov/ovc/>
- 3 Check out [www.mediafamily.org](http://www.mediafamily.org) and learn more about violent video games.
- 4 Donate a book on domestic violence to the local public library or school library in honor of someone.
- 5 Go to a library and read *Breathing Underwater* or *The Gift of Fear*.
- 6 Take the *Anti-Bullying Pledge* displayed on our Website.
- 7 Learn more about anti-bullying by taking the free online *ABC Course: Addressing, Blocking & Curbing Aggression* at [www.pathwaycourses.samhsa.gov/bully](http://www.pathwaycourses.samhsa.gov/bully).
- 8 Read *Odd Girl Out* and learn more about cyberbullying.
- 9 Pick out an item from the Crisis Connection, Inc. *Wish List* to donate to us.
- 10 Make sure every public woman's restroom you use has a CCI poster with pink hotline cards.
- 11 Wear a purple domestic violence awareness ribbon and give one to all of your friends to wear as well.
- 12 Check out the *Just for Men* section of our Website.
- 13 Learn more about Internet safety at [www.netsmartz.org](http://www.netsmartz.org) or [www.cybersmart.org](http://www.cybersmart.org).
- 14 Order and pass-out free brochures from the *National Center for Missing & Exploited Children* at [www.ncmec.org](http://www.ncmec.org).
- 15 Wear black on Thursday in memory of murdered domestic violence victims.
- 16 Are you aware of predatory club drugs? If not, visit our Website.
- 17 Schedule a presentation by CCI with your club or group.
- 18 Decorate a nice notebook and give it to CCI for a client to use as a journal.
- 19 Display *Clothesline Project* t-shirts at your faith institution.
- 20 Borrow the CCI *Remember Me* binder which lists the thousands of murdered victims of domestic violence.
- 21 Check out our Website for info on *Media Messages*.
- 22 Purchase *Not on Our Watch* bracelets from *U.S. Holocaust Museum* and help victims of the Darfur genocide.
- 23 Read some Marge Piercy poetry. Listen to Cici Porter music.
- 24 Go to the INCSAPP Website at [www.purdue.edu/INCSAPP](http://www.purdue.edu/INCSAPP). Print out the free bulletin board materials and post them.
- 25 Host a viewing of the *Searching for Angela Shelton* documentary.
- 26 Schedule earning the *Girl Scouts Against Violence* patch with CCI and a Girl Scout troop.
- 27 Collect nice lotions and toiletries to donate to CCI for the women survivors.
- 28 Arrange with CCI and a Boy Scout troop to earn their *Crime Prevention* patch.
- 29 Insure that all your colleagues, friends and family receive our *The Connected* newsletter. With their permission, get us their email or fax number.
- 30 Learn more about the SANE (Sexual Assault Nurse Examiners) program at [http://www.ojp.usdoj.gov/ovc/publications/bulletins/sane\\_4\\_2001/welcome.html](http://www.ojp.usdoj.gov/ovc/publications/bulletins/sane_4_2001/welcome.html).
- 31 Print out the *Speak Out* booklet from the Avon Foundation at [www.avonfoundation.org](http://www.avonfoundation.org). You may also enjoy reading *Connect – A Mini Magazine for Parents* at [www.connect-endabuse.org](http://www.connect-endabuse.org)
- 32 Financially support CCI to help provide needed local services to persons affected by domestic & sexual violence.



### Keep Smiling...

"I noticed that the holy people in our community, the ones we turned to for spiritual guidance and who conducted the blessing and healing ceremonies, were always the people who had the keenest sense of humor. You could spot them by the laugh wrinkles near their eyes. The hallmark of holiness was not a gaunt, hollow-cheeked, aesthetic look or one of outwardly serenity, but just a common lively sense of humor, honed from birth on the lathe of life's ups and downs, its absurdities and sorrows, its joys and unpredictable encounters. Humor is a side effect of living deeply."

-Navajo Sister Gloria Davis



If the physical, mental, emotional and spiritual well-being of the woman is intact, so too is that of the family, the community and society. *Indigenous Proverb*

“A nation is not conquered until the hearts of its women are on the ground. Then it is finished, no matter how brave its warriors or how strong their weapons.”

*Tsistsistas  
Cheyenne Nation*

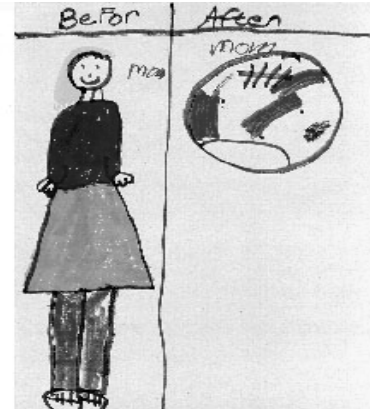
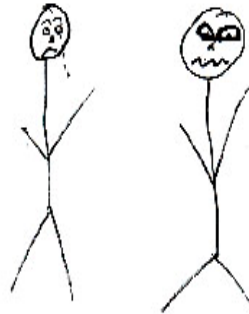
**Resources that can facilitate a faith-based discussion of domestic & sexual violence:**

- [www.jewishwomen.org](http://www.jewishwomen.org)
- [www.stepsingtogether.org](http://www.stepsingtogether.org)
- [www.islaminfo.org](http://www.islaminfo.org)
- [www.cpsdv.org](http://www.cpsdv.org)
- [www.faithinstitute.org](http://www.faithinstitute.org)

**Videos available from our library that you may borrow:**

- Wings like a Dove*
- What Churches Can Do*
- The Healing Years*
- Hear Their Cries*
- Speaking Up*

Dad Hitting Mom



The surest predictor of future violence is living in a home with a violent father.

**Did you know...?**

- Crisis Connection, Inc. offers Women’s Support Groups free to victims & survivors of domestic and sexual violence. Topics include: empowerment, communication, goal setting, decision making, anger management, self-care, assertiveness and boundaries. For Dubois County call (482-1555), Perry County (547-8878) and Spencer County (649-2303).
- Relationship violence can include threatening suicide, accusations of flirting & cheating, verbal abuse, telling you how to dress or think, and not letting you have your own life. You are responsible for your own actions and cannot change anyone else. Crisis Connection (1-800-245-4580) would be happy to speak to you confidentially and at no cost.
- Did you know batterers often abuse or kill pets as a way to threaten their victims? Identifying animal abusers can often help a family identify potential domestic violence. Please contact the Humane Society or the police if you know of any pet abuse.



For me

**HATE CRIME**

is being assaulted  
by my partner

“O Mankind! We created you from a single soul, male and female, and made you into peoples and tribes so that you may come to know one another.”  
*Qur’an 49:13*

**Domestic Violence is NOT:**

- Genetically inherited or
- caused by illness or
- caused by alcohol or drugs or
- the result of stress or anger or
- due to “a bad temper” or
- due to the behavior of the victim, children or a problem in the relationship:

**Domestic violence is a choice... there is always a choice.**

**“Injustice anywhere is a threat to justice everywhere.”  
-Rev. Martin Luther King, Jr.**

**How YOU Can Help Spread Awareness**

- Hang one of our hotline posters in every woman’s bathroom at your workplace, place of worship, favorite restaurant, school, hair salon, dentist and doctor office, Vet’s, and gas station. Commit to refilling the cards every time you visit.
- Invite Joan and Natalie to speak at your workplace, place of worship, and club meetings so that others may become aware...call us today.
- Make a tax-deductible donation to CCI to assist us in our work in eradicating violence in our community...call us today, or please mail your monetary donation to Crisis Connection Inc, P.O. Box 903, Jasper, IN 47547

**YOU can make a BIG difference.**

**Crisis Connection Inc. Statistics 10/1/05 through 9/30/06 (one year)**

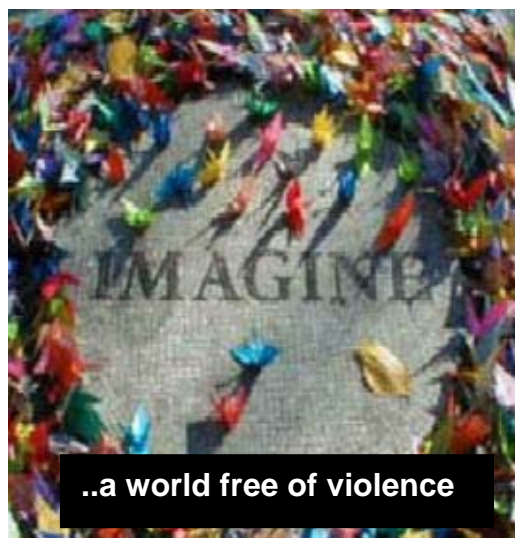
|                              |        |                              |     |
|------------------------------|--------|------------------------------|-----|
| DV Clients                   | 608    | SA Clients                   | 199 |
| DV Children                  | 453    |                              |     |
| DV Hotline Calls             | 1,722  | SA Hotline Calls             | 584 |
| DV One-on Ones               | 577    | SA One-on-Ones               | 209 |
| DV Crisis Counseling         | 538    | SA Crisis Counseling         | 244 |
| DV Information               | 1,408  | SA Information               | 494 |
| DV Follow-up                 | 1,882  | SA Follow-up                 | 657 |
| DV Personal Advocacy         | 2,162  | SA Personal Advocacy         | 707 |
| DV Criminal Justice Contacts | 778    | SA Criminal Justice Contacts | 309 |
| DV Emergency Transports      | 28     | SA Emergency Transports      | 18  |
| DV CPS Reports               | 14     | SA CPS Reports               | 6   |
| DV Women’s Group             | 101    |                              |     |
| DV Emergency Housing Nights  | 171    | SA Emergency Housing Nights  | 64  |
| DV Financial Assists         | 150    | SA Financial Assists         | 82  |
| DV Deaths                    | 2      | SA Clients under age 18      | 86  |
| Batterer’s Intervention Men  | 35     | SA Reports to Police         | 32  |
| Women’s Anger Management     | 20     | SA Prosecutions              | 12  |
| Presentations                | 532    | SA Convictions               | 10  |
| Attendance @ Presentations   | 19,373 |                              |     |

**DV = domestic violence SA = sexual assault**

**Did You Know?**

- The U.S. Advisory Board on Child Abuse suggests that domestic violence may be the single major precursor to child abuse and neglect fatalities in this country.
- In a national survey of more than 6,000 American families, 50 percent of the men who frequently assaulted their wives also frequently abused their children.
- A recent study found that school-age children who witness violence exhibit a range of problem behaviors including depression, anxiety, and violence towards peers.

Source: *Family Violence Prevention Fund*  
<http://www.endabuse.org/programs/children/>



## Mistakes we as Christians have made

Bishop John Harrower

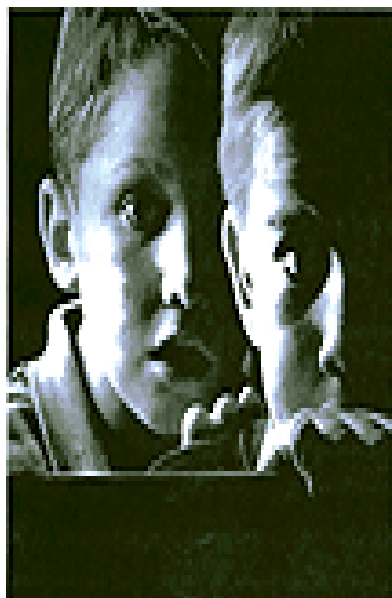
***"We have fooled ourselves that domestic violence does not happen in good Christian homes - thus we have failed to hear and failed to believe."***

My own experience is that when told of abuse by a man I know, I am inclined to disbelief: how can this be true? He is a Christian; I know him and have even ministered and prayed with him. This discomfort inclines me/us not to hear or believe a victim. This leaves both the victims and the perpetrators in some 'non land' -where their experience is somehow not real. Their struggles are not real. What was happening to them, either as victim or perpetrator, was so far off the Christian radar screen, that they were totally on their own, in a sort of terrifying 'non land.'

I am reminded that Jesus involved himself in the reality of life: including the 'unclean,' 'the damaged,' the 'messed up' and 'the sinning.' We are to draw alongside those within our flock who were struggling with hidden alcoholism, domestic violence, incest, etc.

Like Jesus, we must be prepared to see what is actually happening and to act on this reality, no matter how messy and seemingly unbelievable it may be. The doctrine of sin challenges our own discipleship and also the possibility of wrong in the other person; no matter how 'Christian' they may appear to be.

**Today these children  
saw something they  
are never going  
to forget...**



**they saw their father  
kill their mother**

**Crisis Connection, Inc.  
24-Hour Hotline  
1-800-245-4580**

## Coordinated Community Action Model

*Coordinated Community Response* is an intervention strategy developed by the Domestic Abuse Intervention Project (DAIP) in Duluth, MN. This strategy, often called the "Duluth Model," is a "system of networks, agreements, processes and applied principles created by the local advocacy movement, criminal justice agencies, and human service programs."

**Clergy can:** \*speak out against violence from the pulpit; \*routinely assess for violence in premarital and pastoral counseling; \*oppose the use of biblical or theological justification for violence; \*reject patriarchal dominance as a preferred social pattern; and \*seek out and maintain a learning system for a *Coordinated Community Response*.

